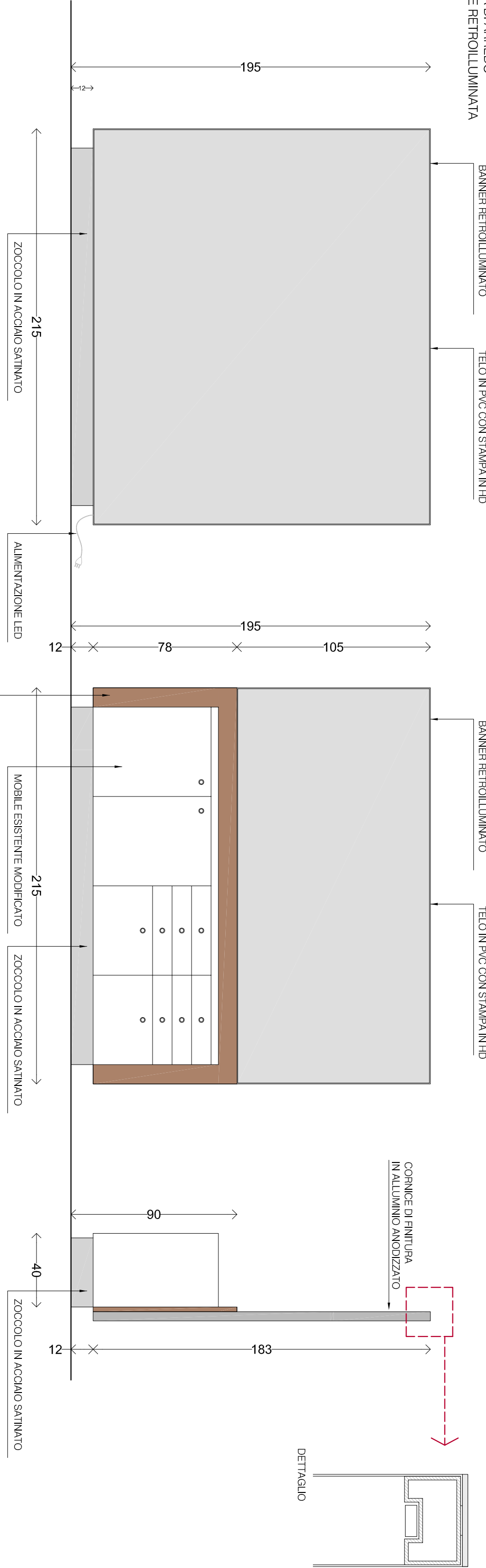


BARR.41
PARETE DIVISORIA DI ARREDO
AUTOPORTANTE E RETTOLUMINATA



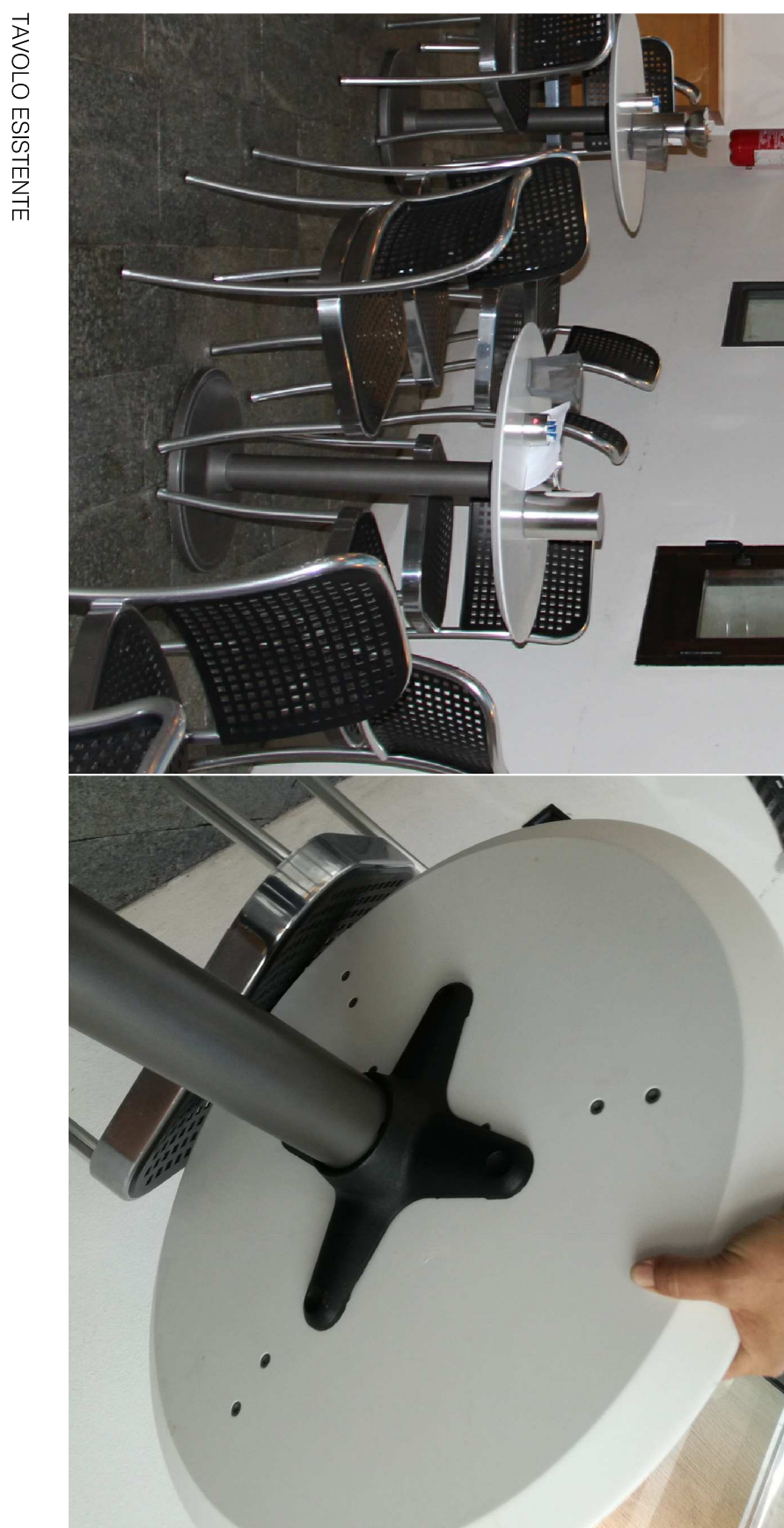
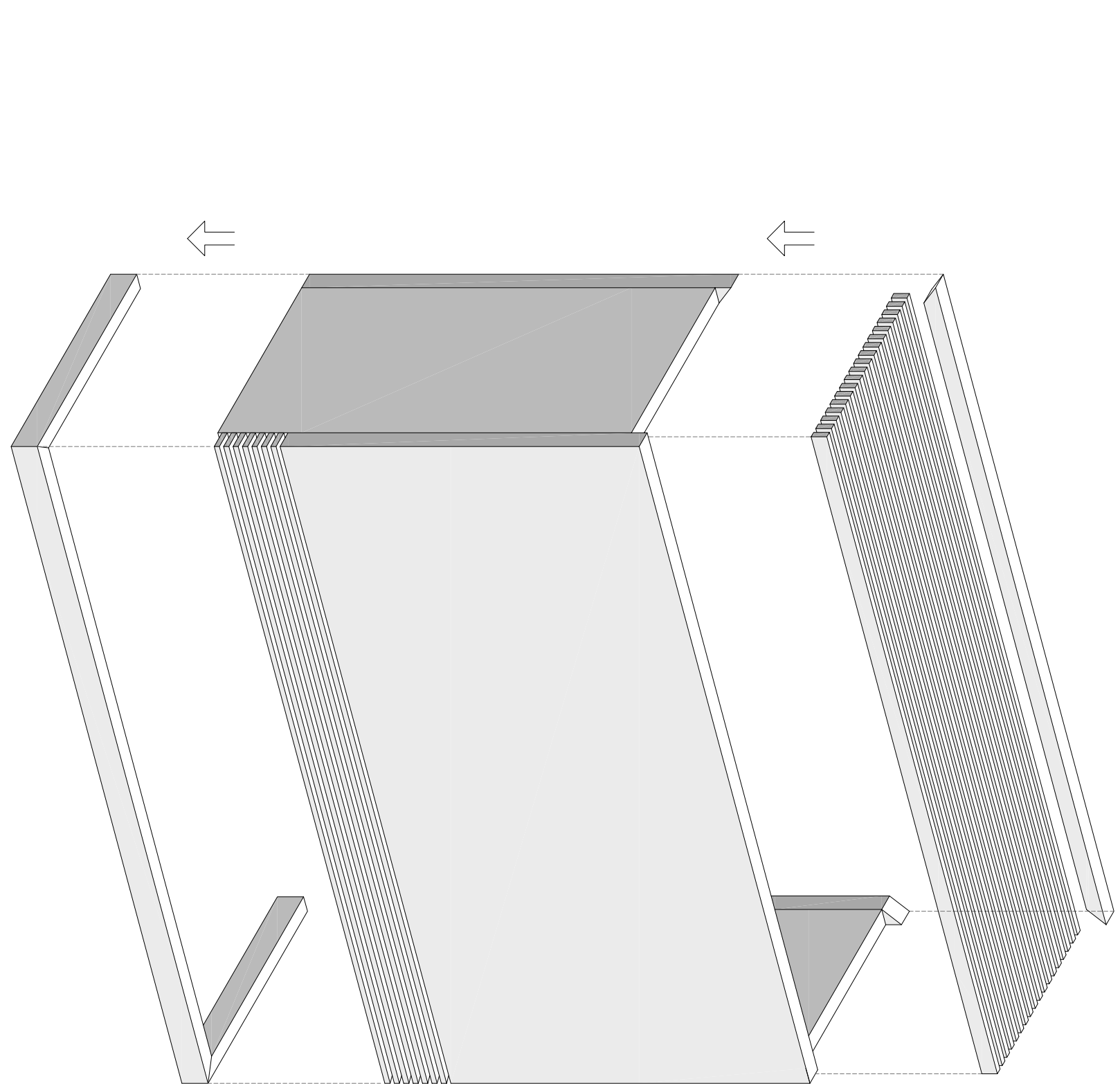
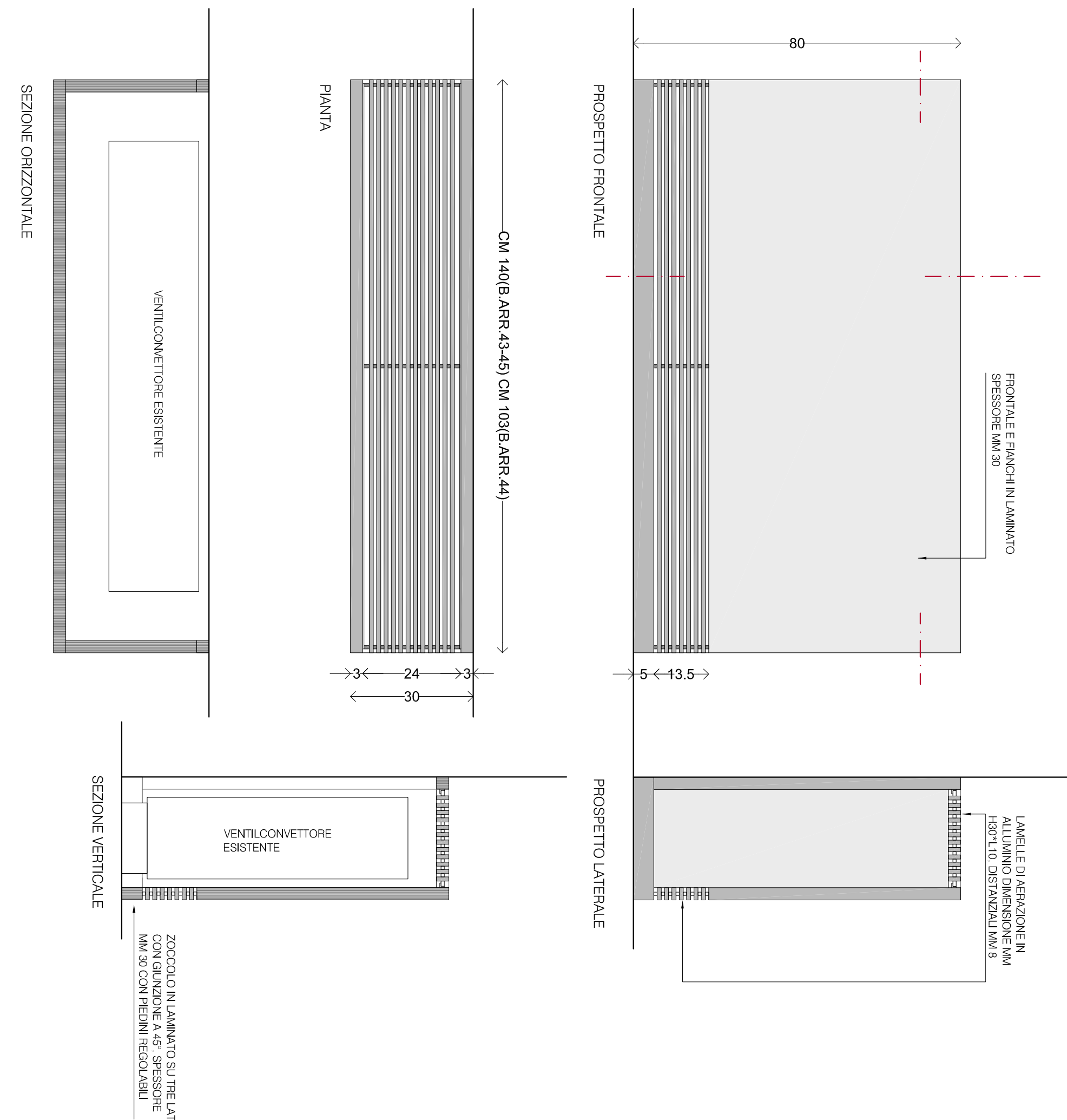
CONNETTORE DI PARETE
IN ALLUMINIO ANODIZZATO

DETTAGLIO



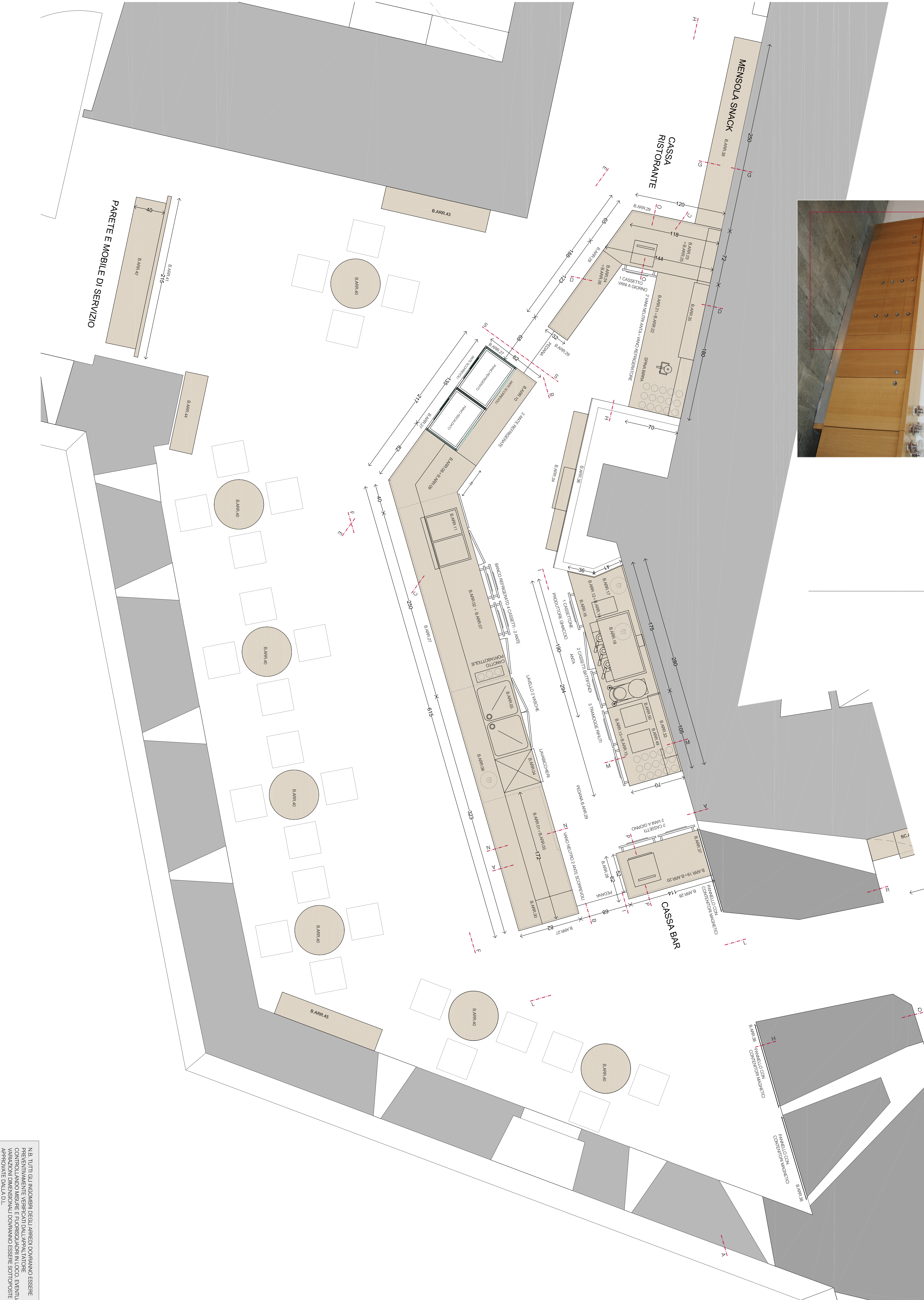
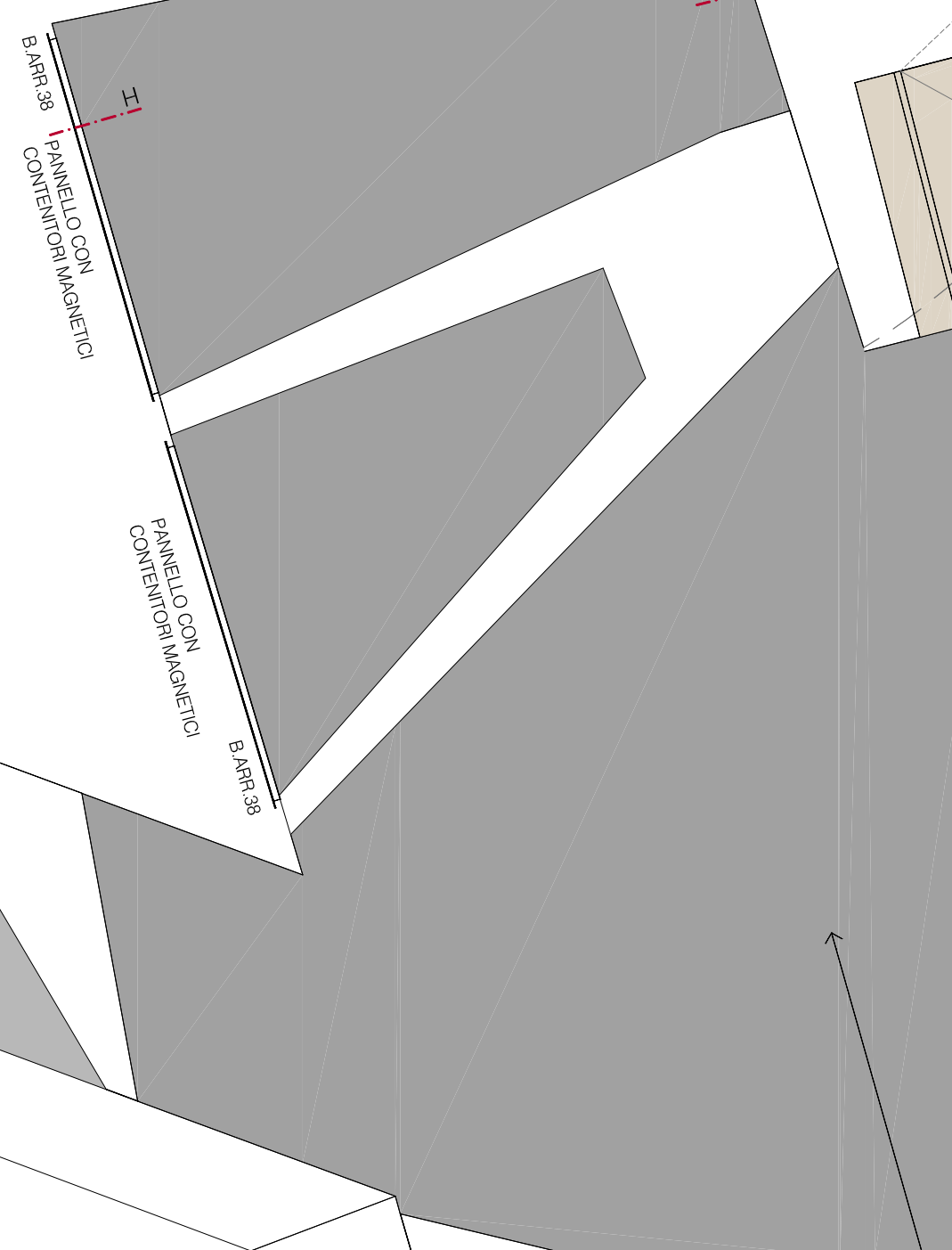
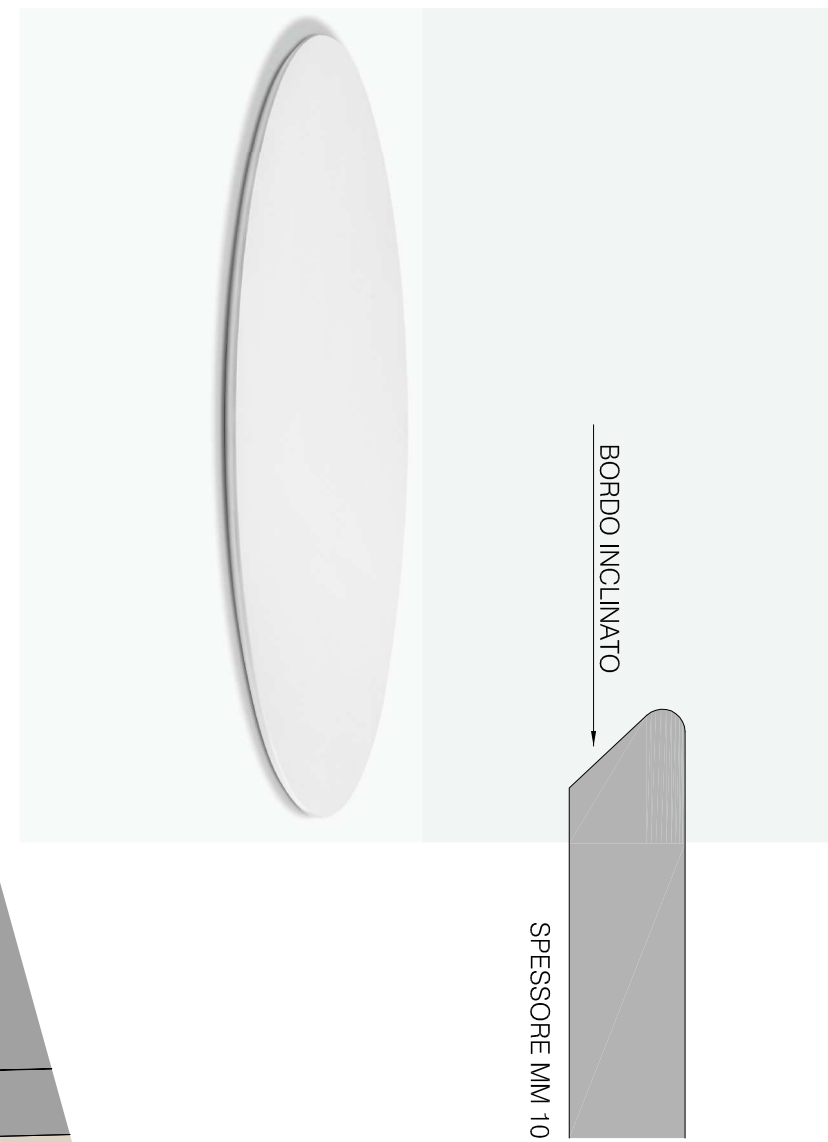
BARR.42
MOBILE ESISTENTE DA MOBILIZZARE

BARR.43-BARR.44-BARR.45
RIVESTIMENTO VENTIL. CONNETTORE
ESISTENTE SPECIFICAZIONE



TAVOLO ESISTENTE

BARR.40
PILANO IN STRUTTURATO CON BORDO INQUADRATO TIPO
FERMALI - SOLI LUMINANTI a anelli, COLORE BIANCO,
DIAMETRO 50 CM. FISSATO A CANTIERE ESISTENTE



N.B. TUTTI GLI INCASSI DEGLI ARREDI DEVONO ESSERE
CONTROLLATI IN LORO POSIZIONE IN LORO POSIZIONE
VARIAZIONI DIMENSIONALI DEVONO ESSERE SOTTOCOSTE E
APPROPRIATE DIMENSIONI.