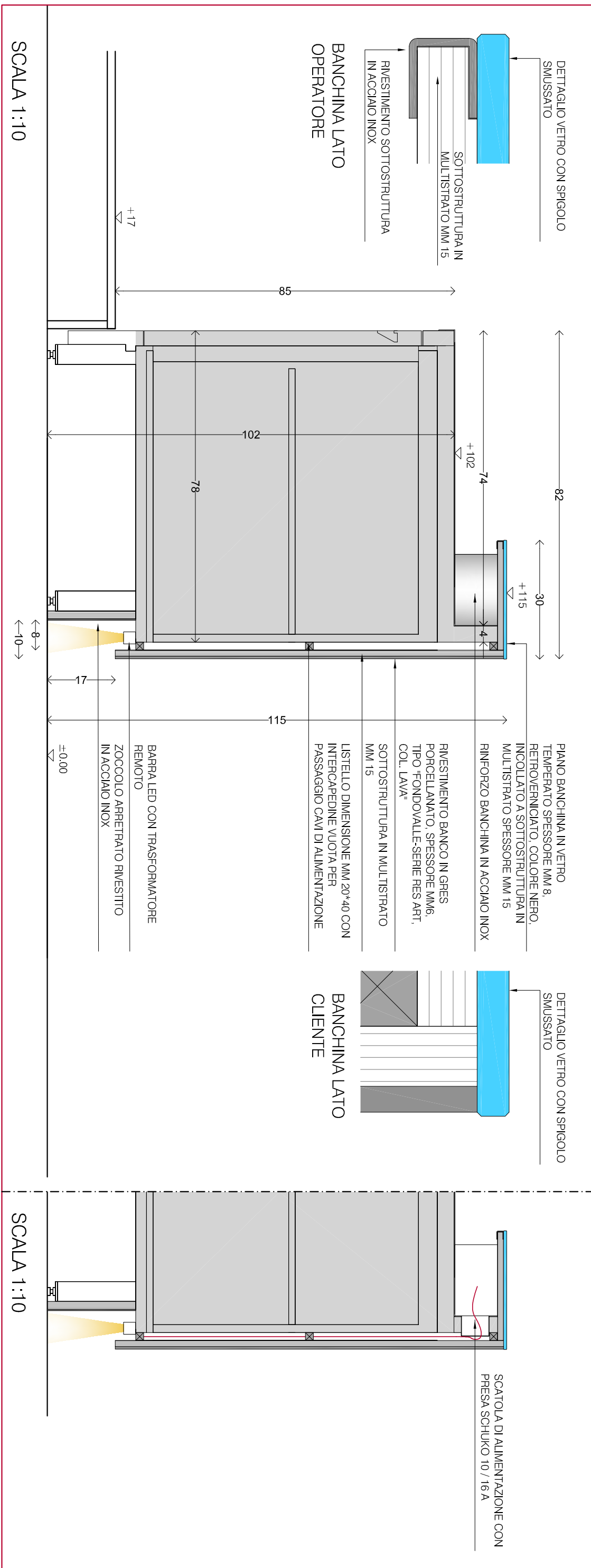


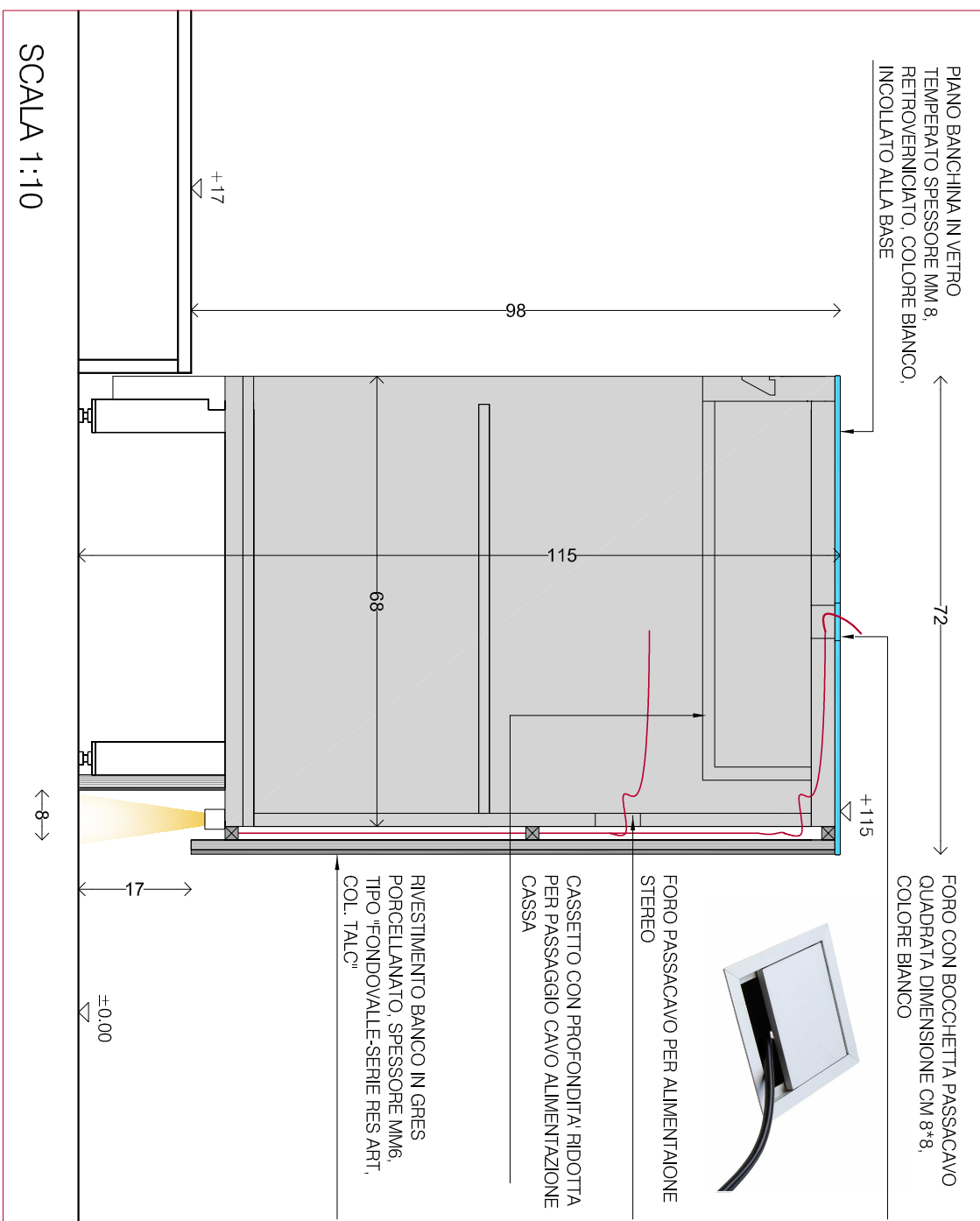
PROGETTO DI RIQUALIFICAZIONE DI AMBIENTI ALL'INTERNO DEL FORTE DI
BARB: CAFFETERIA DI GOLA, RISTORANTE POLYMERERA, BOOKSHOP, SALA
CONFERENZE OLIVERO

PROGETTO ESECUTIVO CAFFETERIA E RISTORANTE	
BAR: PROSPETTI, SEZIONI E DETTAGLI DI ARREDO	TAVOLA E ARR.02
OTTOBRE 2018	SCALE 1:10-1:20

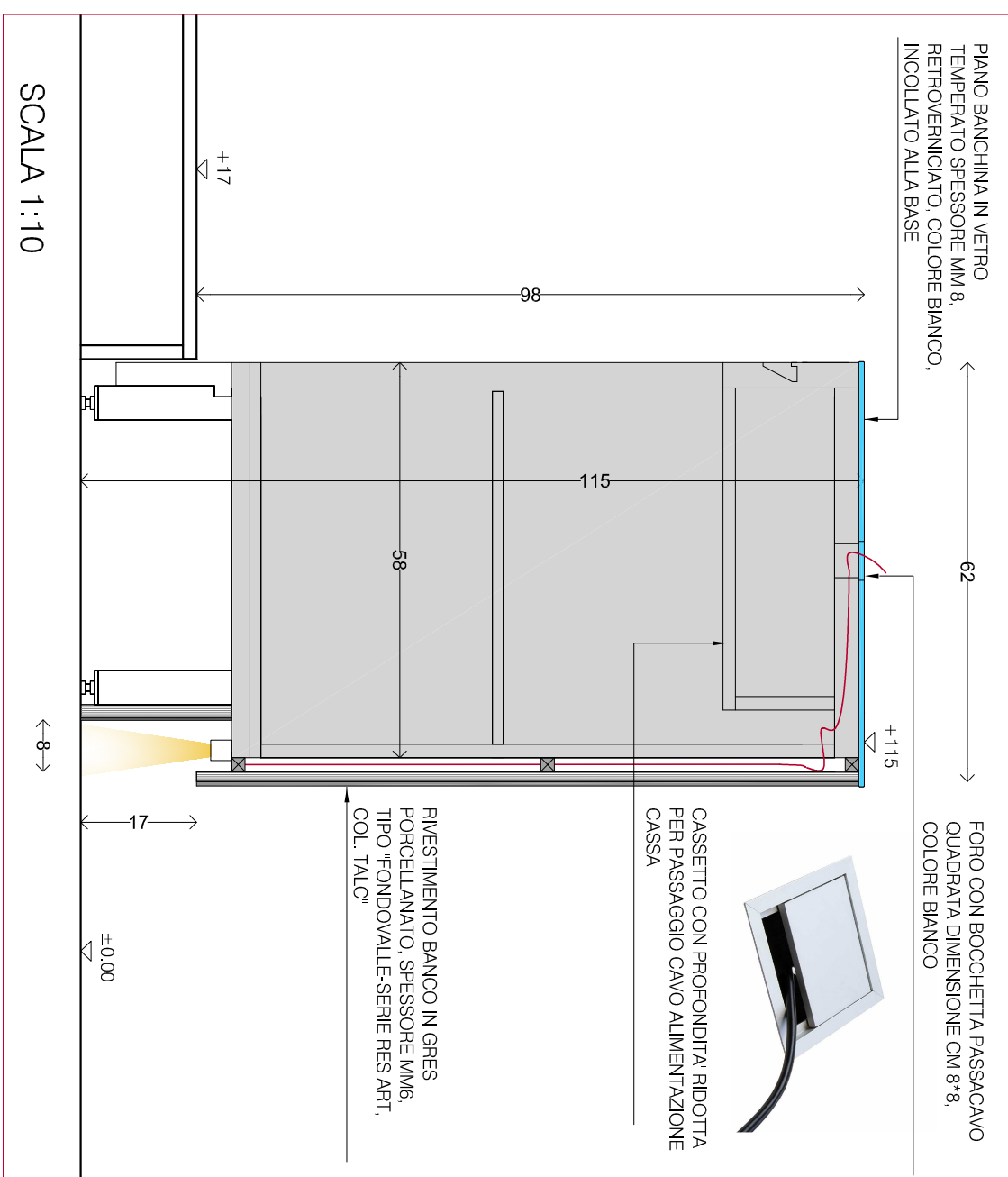
SEZIONE NN DETTAGLIO BANCO BAR



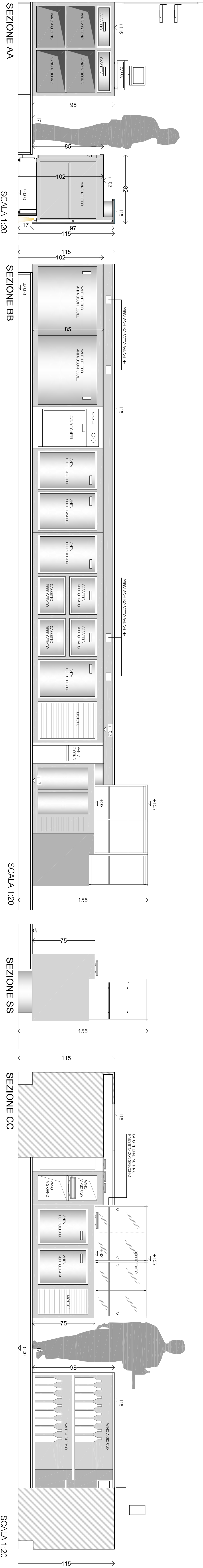
SEZIONE OO DETTAGLIO BANCO CASSA RISTORANTE



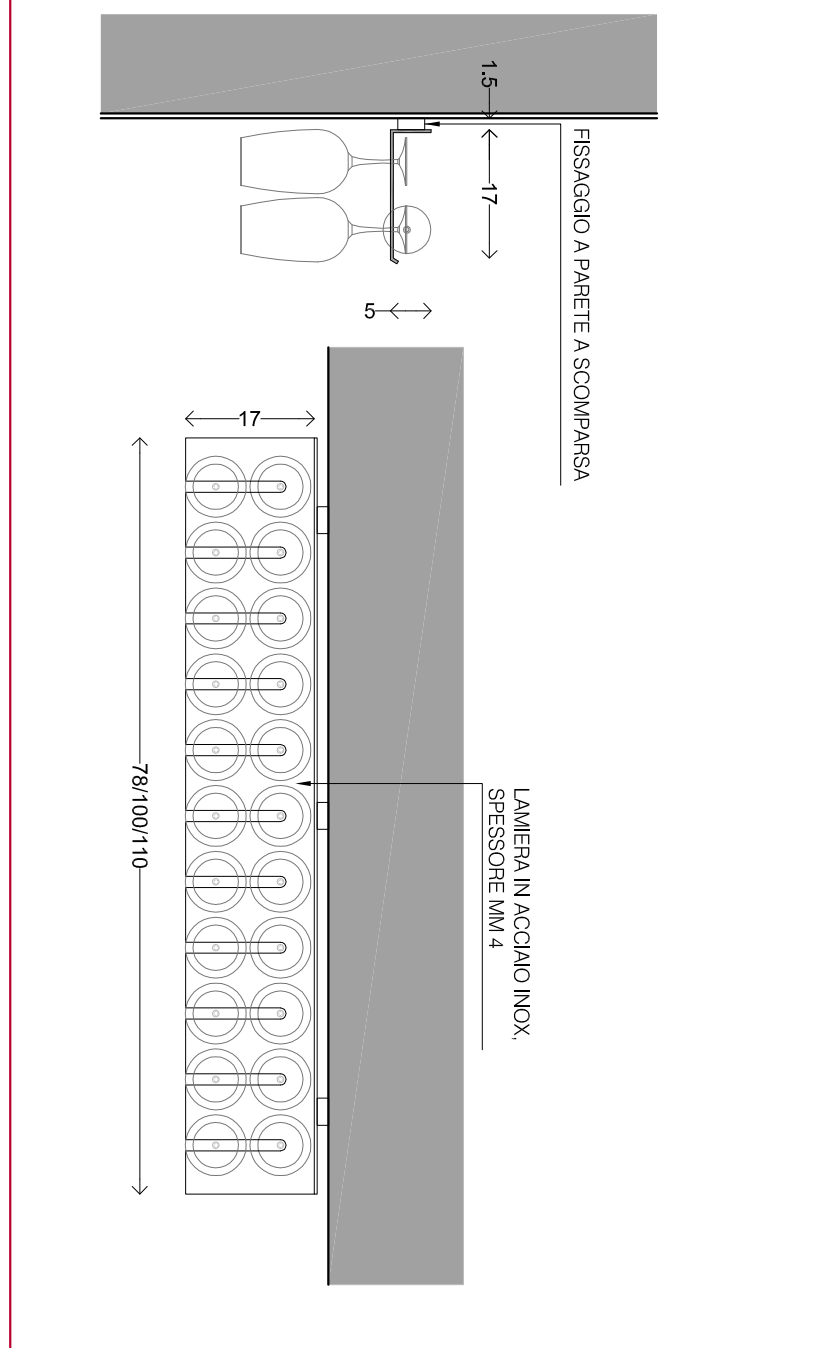
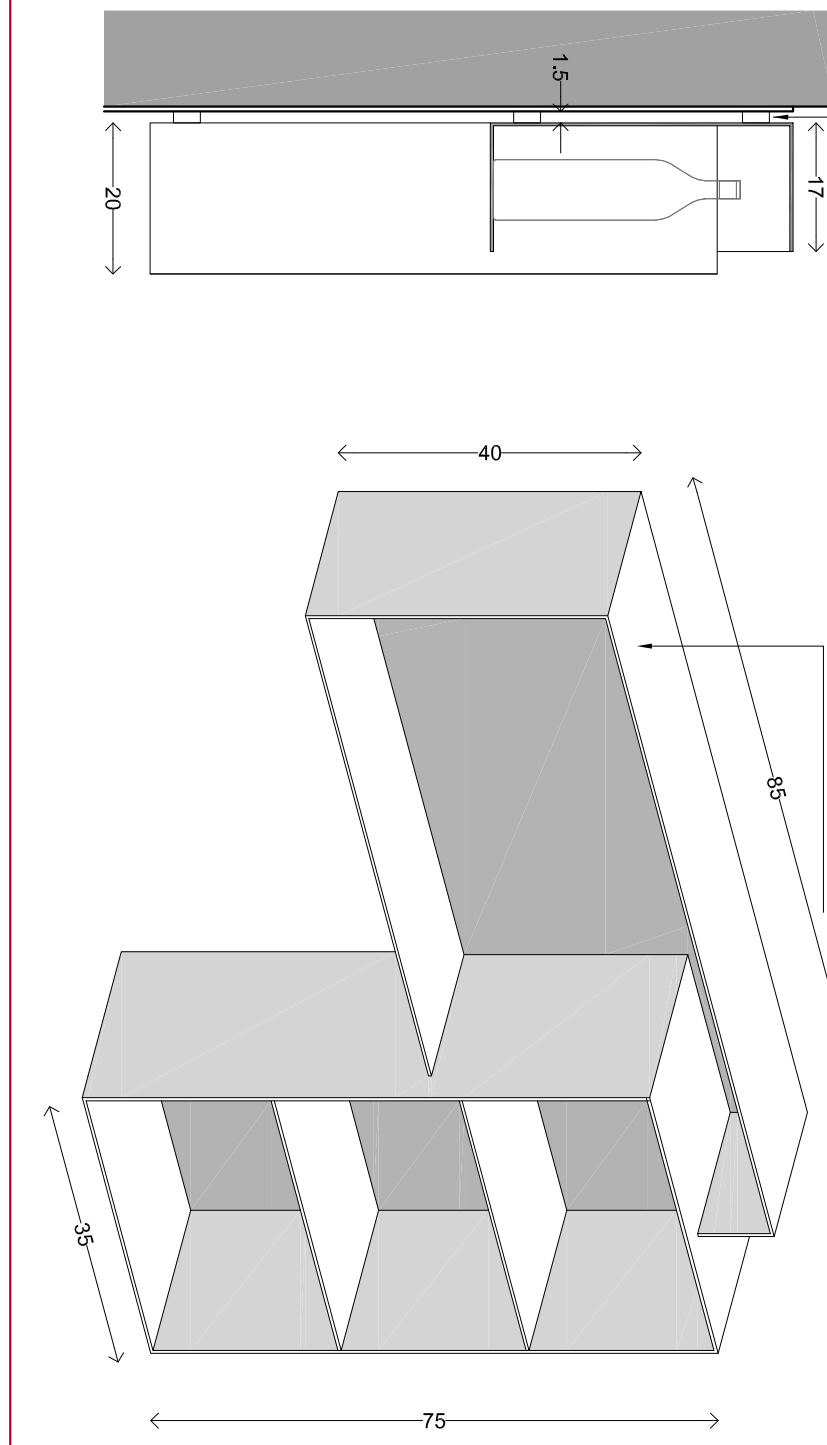
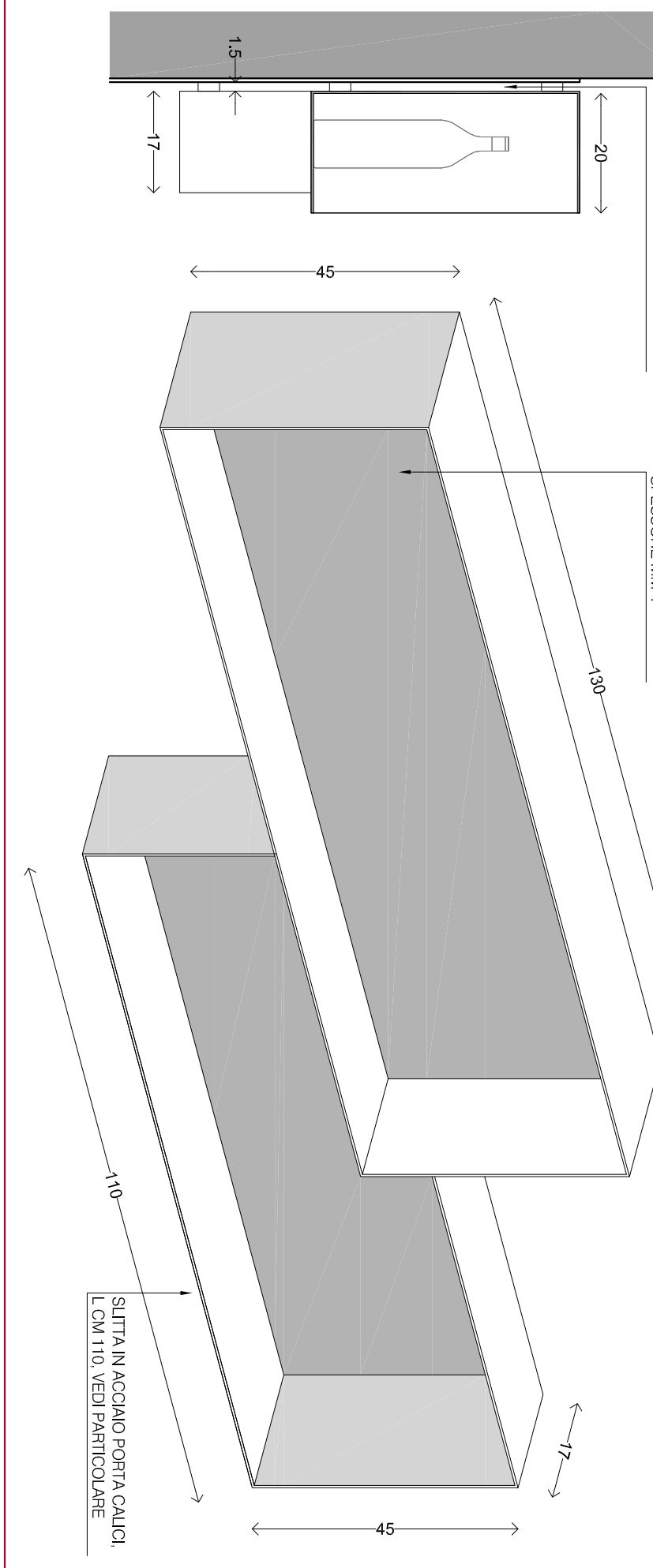
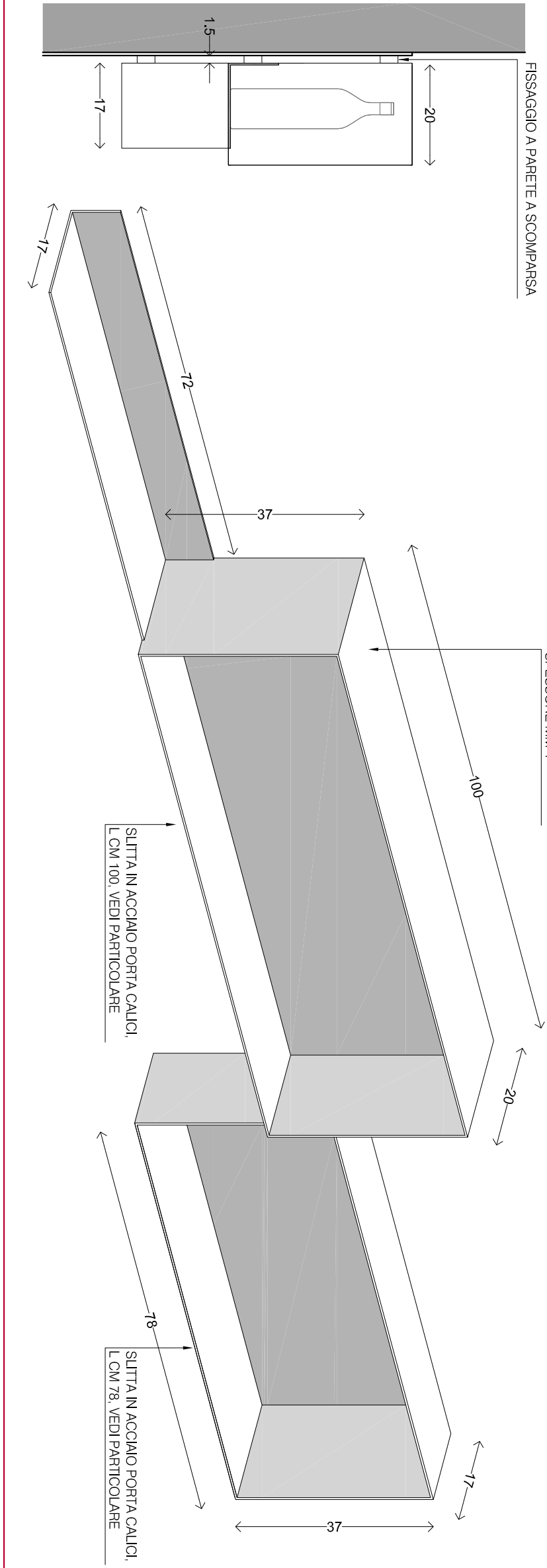
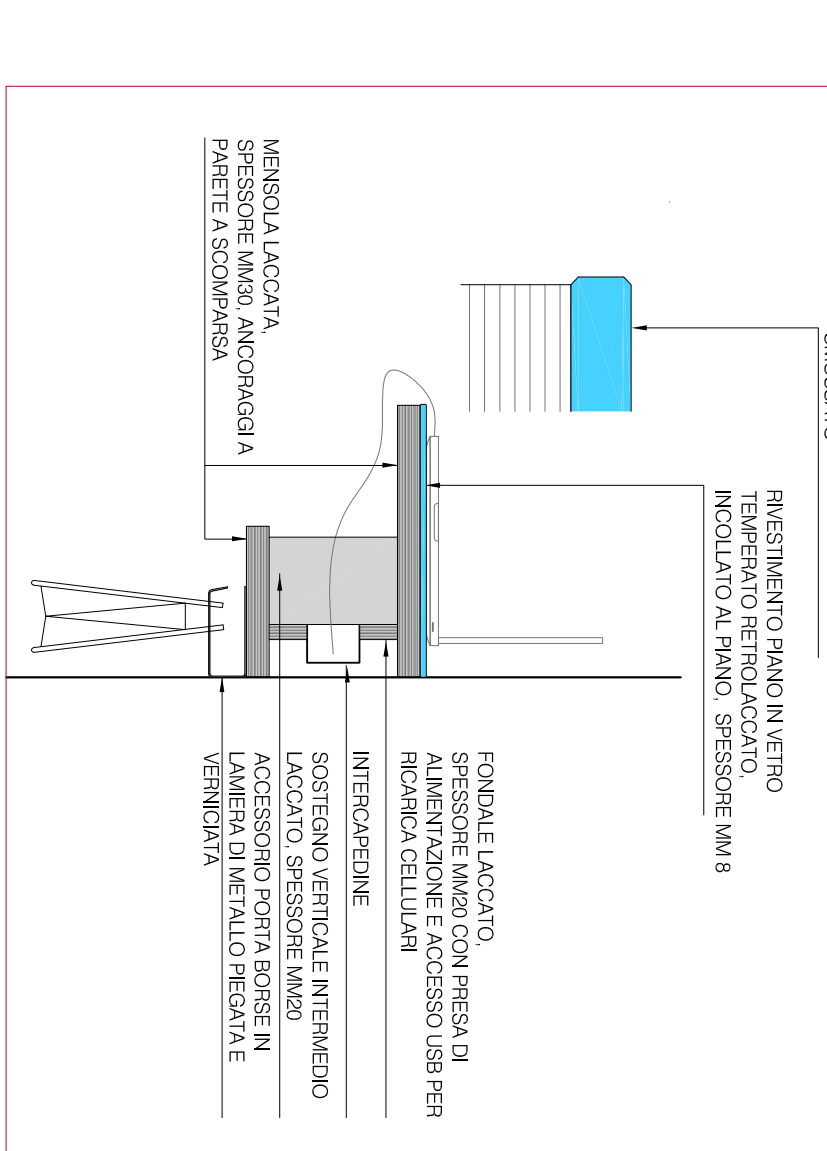
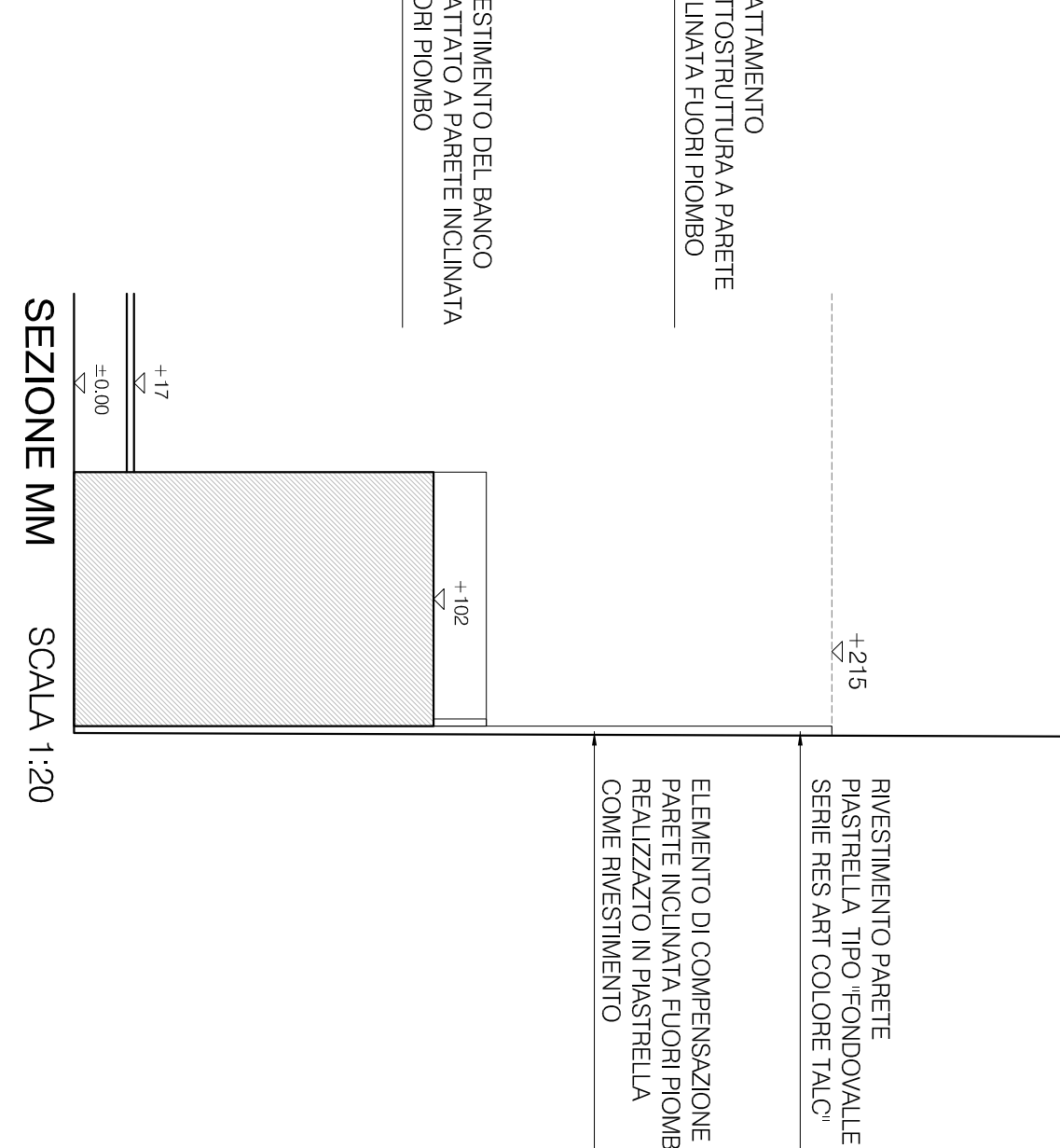
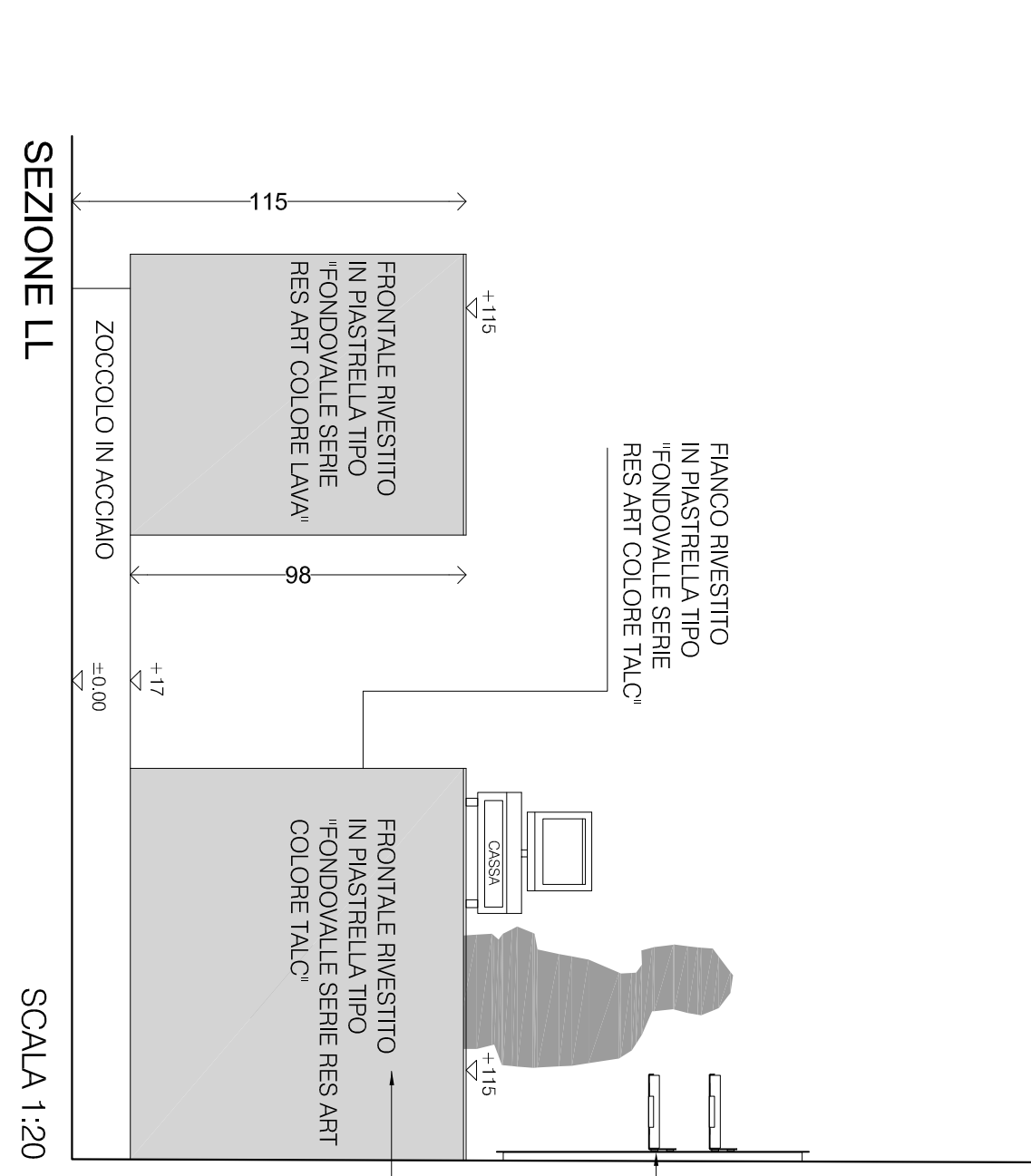
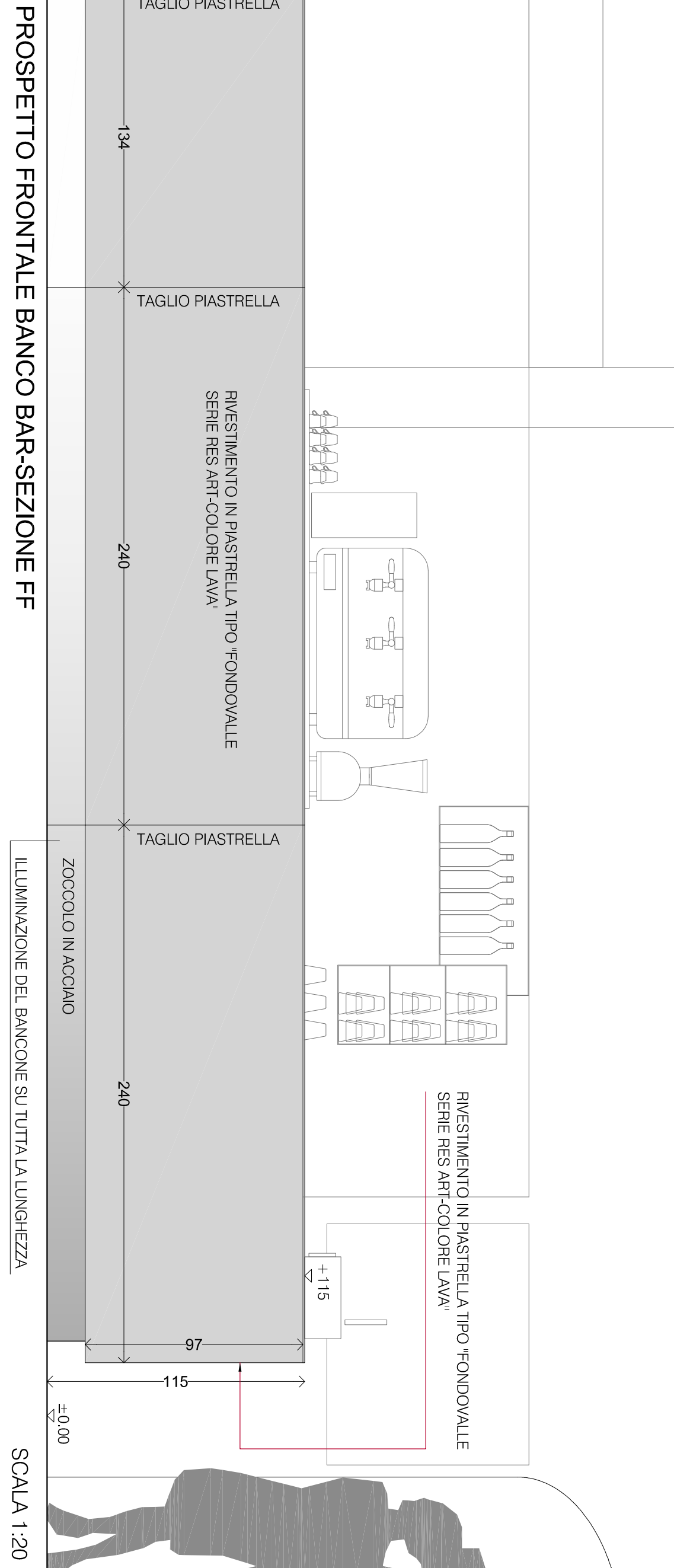
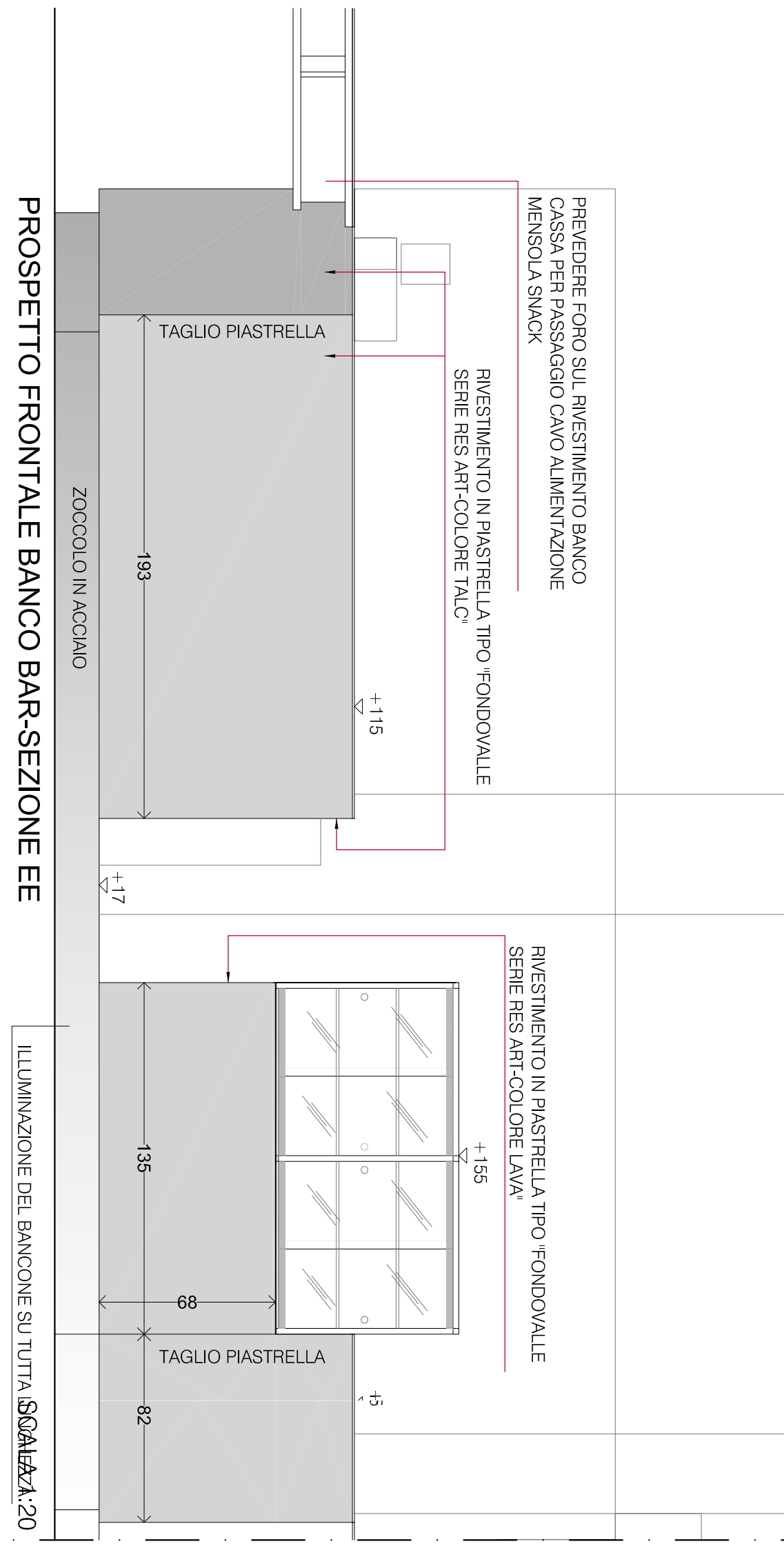
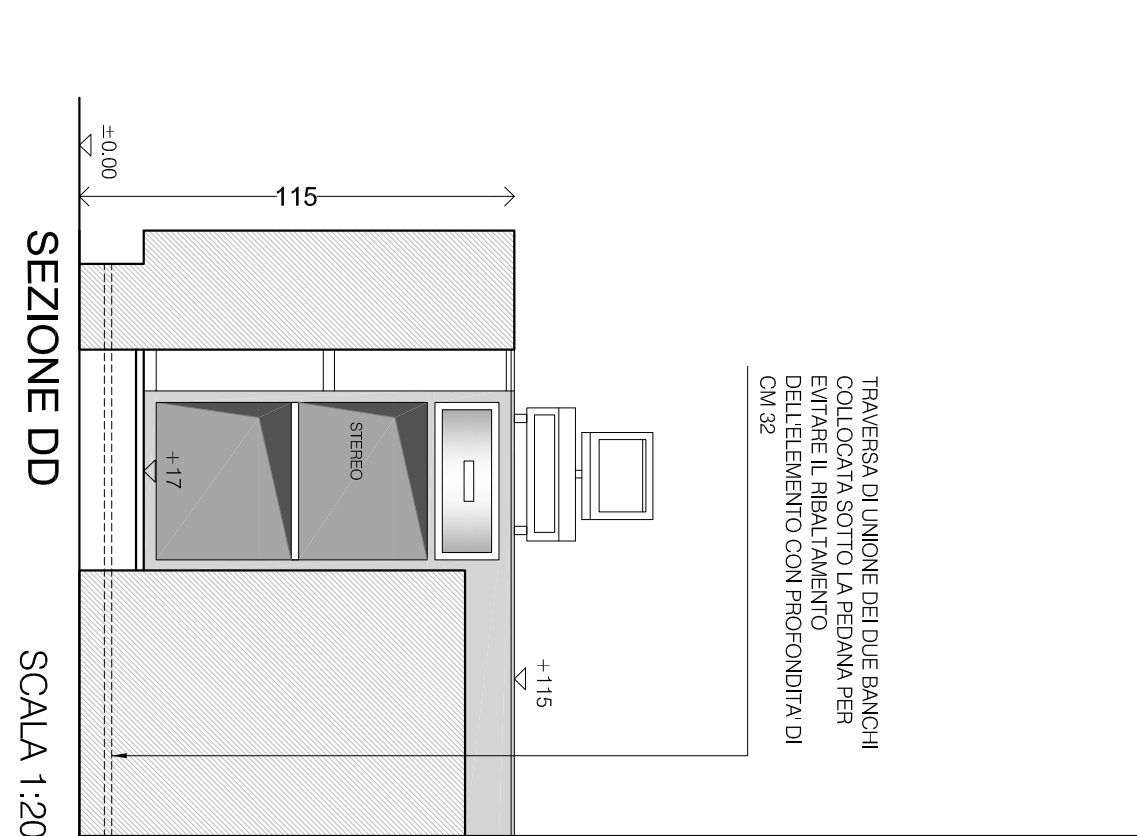
SEZIONE PP DETTAGLIO BANCO CASSA BAR



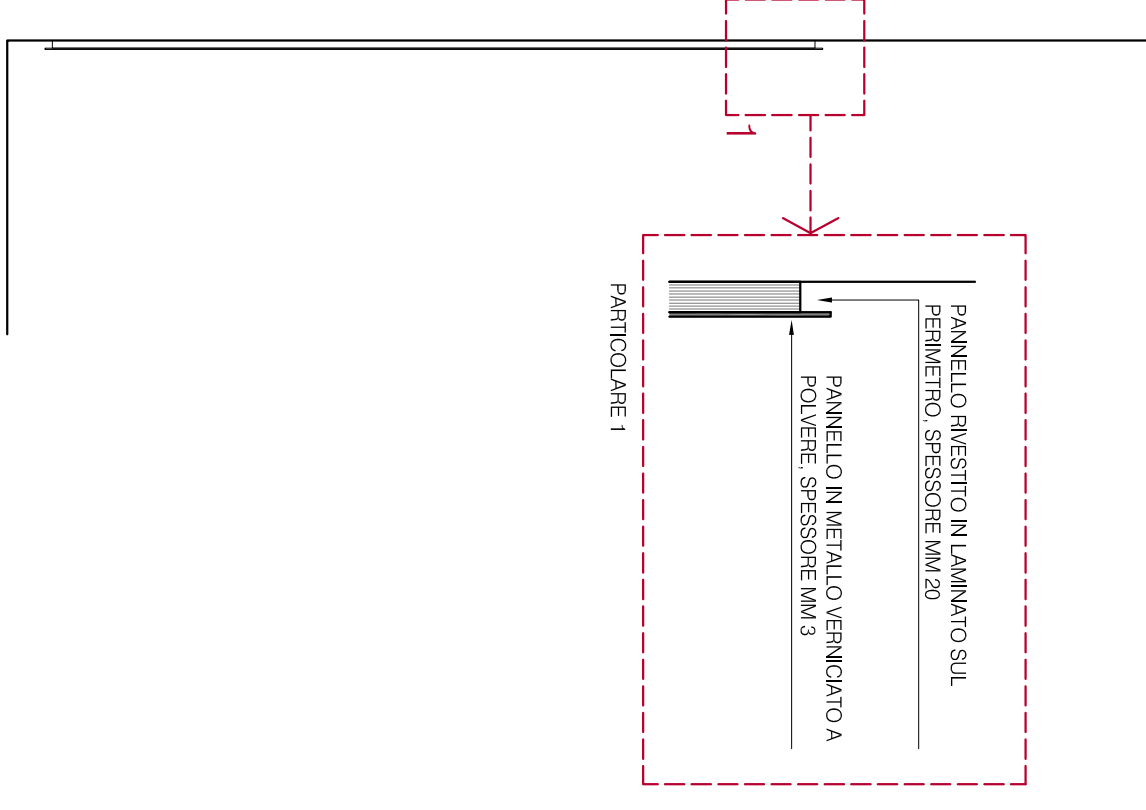
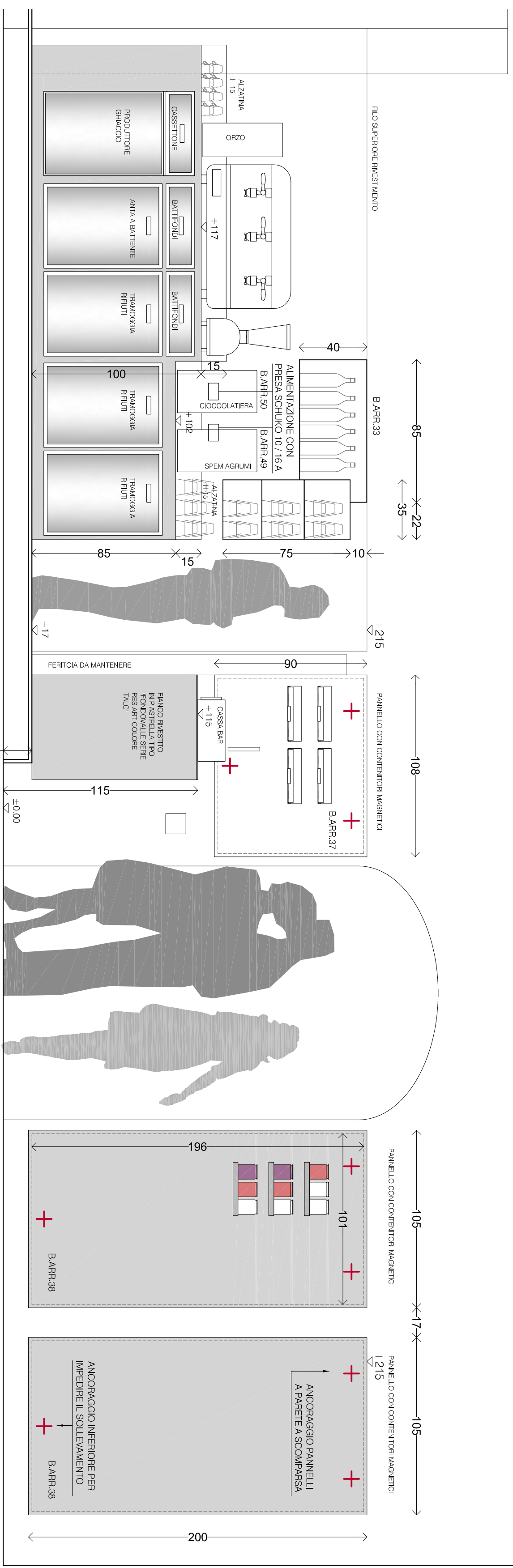
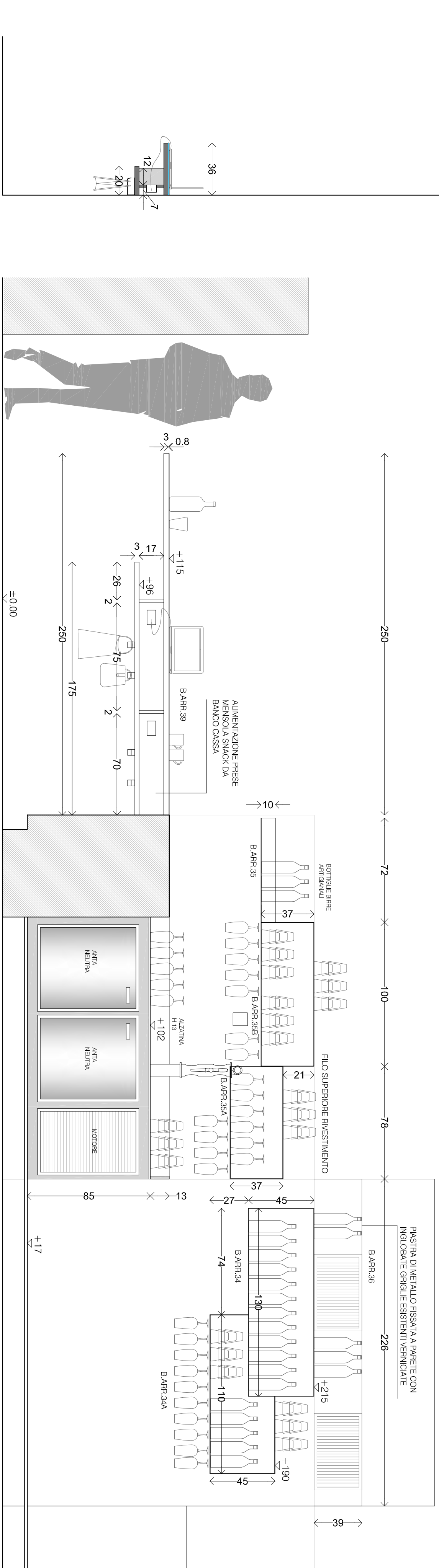
TIPOLOGIA DI ANTE E CASSETTO BASI IN ACCIAIO
CON DISEGNO TELAIO SQUADRATO



N.B. TUTTI GLI INGOMBRI DEGLI ARREDI DEVONO ESSERE
CONTROLLATI NELLE LORO DIMENSIONI E NEI LORO
VARIABILI DIMENSIONI DEVONO ESSERE SOTTOPOSTE E
APPROVATE DALLA D.L.



DETTAGLIO SEZIONE GG



SEZIONE GG
SCALA 1:20

SEZIONE HH
SCALA 1:20

SCALA 1:20

SEZIONE II
SCALA 1:20

SCALA 1:20

SEZIONE HH